

300 SERIES

FLAT METAL HINGE WITH BORE RIGHT THROUGH

Material:

O300:

Die cast zamak alloy (zinc, aluminium and copper alloy).

O300 CIN:

AISI 316 stainless steel.

Surface:

O300:

Smooth. Black cataphoresis paint.

O300 L:

Shiny chrome plated.

O300 CIN:

Natural brushed.

Main Insert:

All versions:

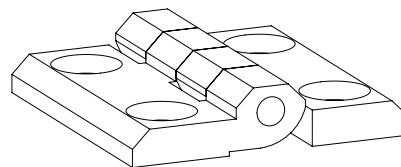
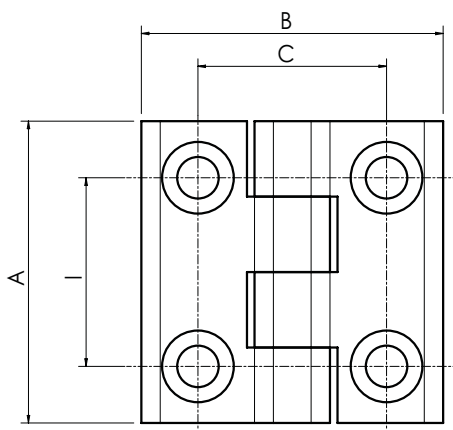
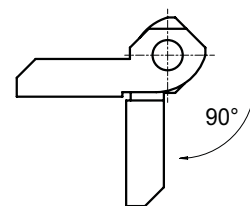
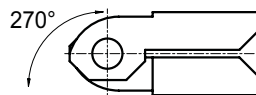
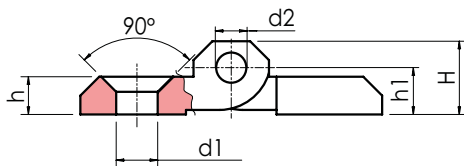
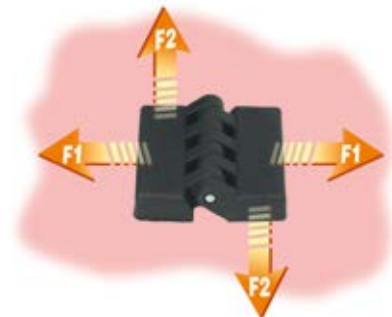
AISI 303 stainless steel rotation pin.

Hole:

Through hole obtained by moulding. 90° counter-sunk hole for UNI 5933 - UNI 6109 screw.

SPECIAL REQUESTS:

- None.



BLACK ZAMAK HINGE

O300



ZAMAK



	Art.	I	C	A	B	H	h	h1	d2	d1	g	F1 (N)	F2 (N)
●	O30025.ZG5.501	25	25	40	40	9	5	5,5	4	5,5	47		
●	O30030.ZG6.501	30	30	50	50	11,5	6	6	6	6,5	92	6230	1420
●	O30036.ZG6.501	36	36	60	60	11,5	6	6	6	6,5	100		
●	O30036.ZG8.501	36	36	60	60	11,5	6	6	6	8,5	98		
●	O30040.ZG6.501	40	40	64	64	11,5	6	6	6	6,5	110	4340	4200

CHROME PLATED ZAMAK HINGE

O300 L



ZAMAK



	Art.	I	C	A	B	H	h	h1	d2	d1	g	F1 (N)	F2 (N)
●	O30025.ZG5.5L	25	25	40	40	9	5	5,5	4	5,5	47		
●	O30030.ZG6.5L	30	30	50	50	11,5	6	6	6	6,5	92	6230	1420
●	O30036.ZG8.5L	36	36	60	60	15	8	9	8	8,5	100		

STAINLESS STEEL HINGE

O300 CIN



AISI 316



INOX



	Art.	I	C	A	B	H	h	h1	d2	d1	g	F1 (N)	F2 (N)
●	O30025.HG5.5CIN	25	25	40	40	9	5	5,5	4	5,5	60		
●	O30030.HG6.5CIN	30	30	50	50	11	5,5	6,5	6	6,5	95	19600	9800
●	O30036.HG8.5CIN	36	36	60	60	14,5	7,7	8,5	8	8,5	185		

Presumable presence in the stock in %

() 90% (●) 40% (●) 5% (●)

BOTECO® - © All right reserved - www.boteco.it

Any unauthorized reproduction is strictly forbidden



**O
HINGES**